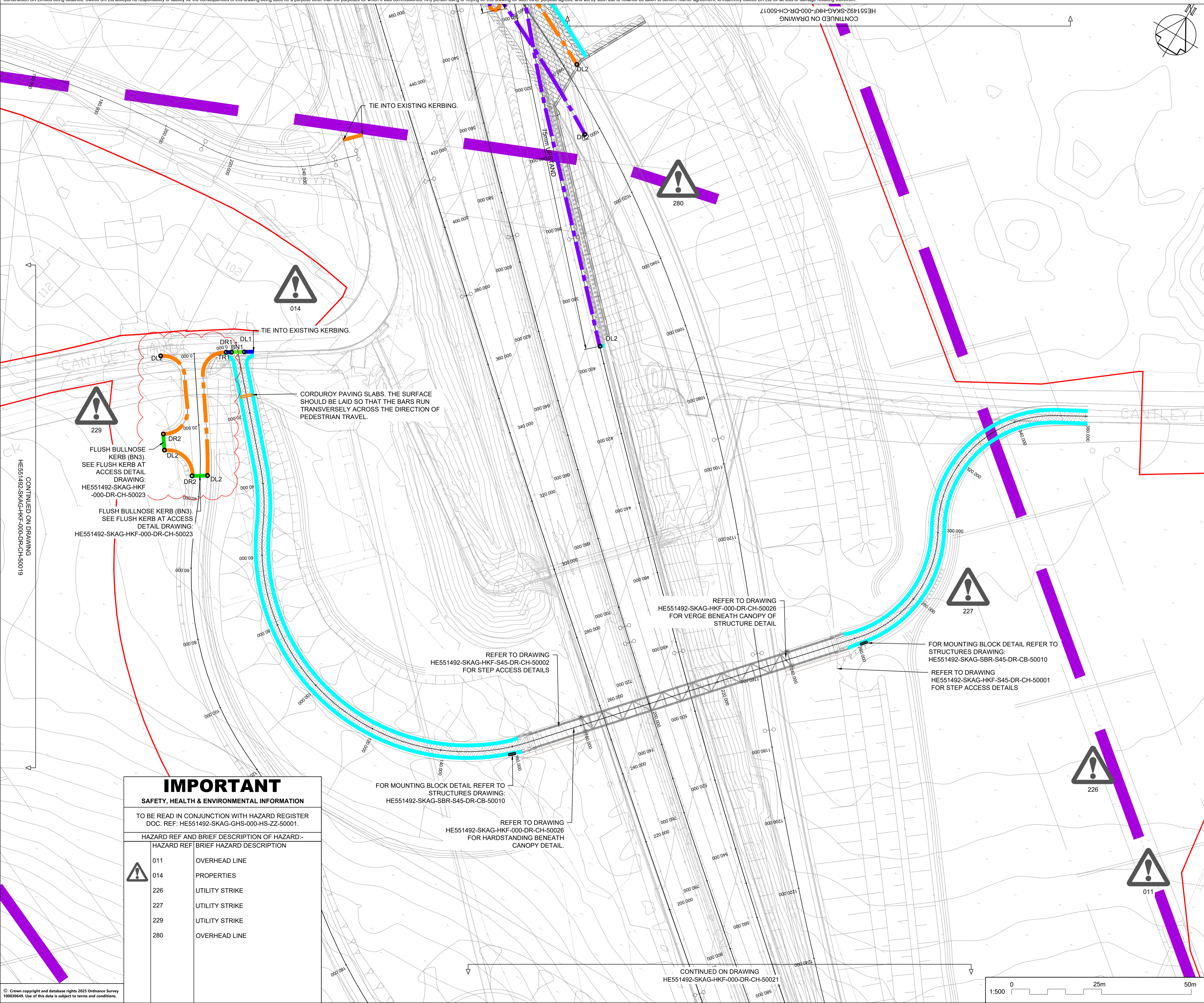
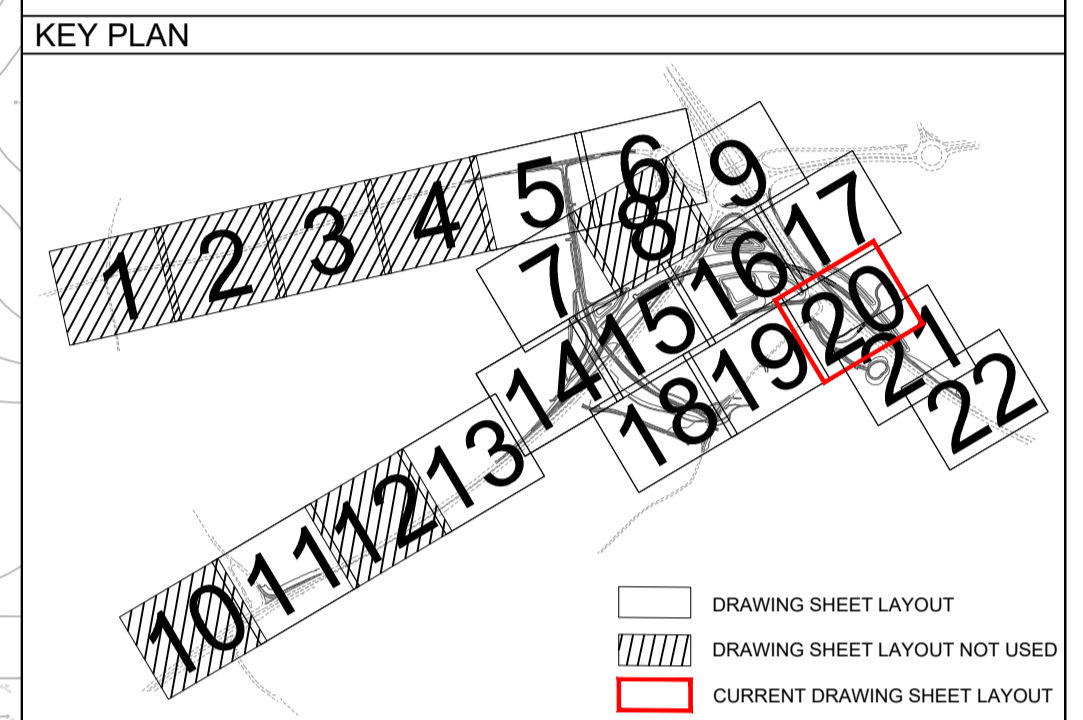


This drawing should not be relied on or used in circumstances other than those for which it was originally prepared and for which Sweco UK Ltd was commissioned. Sweco UK Ltd accepts no responsibility for this drawing to any party other than the person by whom it was commissioned. This drawing has been prepared on behalf of Skanska Construction UK Limited by Sweco UK Ltd for the titled project or named part thereof and should not be relied upon or used for any other project without an independent check being carried out as to its suitability and prior written authority of Skanska Construction UK Limited being obtained. Sweco UK Ltd accepts no responsibility or liability for the consequences of this drawing being used for a purpose other than the purposes for which it was commissioned. Any person using or relying on this drawing for such other purpose agrees, and will by such use or reliance be taken to confirm his/her agreement, to indemnify Sweco UK Ltd for all loss or damage resulting therefrom.



- NOTES**
1. THIS DRAWING SHALL ONLY BE USED FOR THE DESIGN ELEMENT STATED IN THE DRAWING TITLE.
 2. ALL DIMENSION IN METRES (m) UNLESS OTHERWISE STATED.
 3. DO NOT SCALE FROM THIS DRAWING.
 4. FOR STANDARD NOTES REFER TO DRAWING HE551492-SKAG-HKF-000-DR-CH-50000.



REV	DATE	REVISION NOTE	ORG	CHKD	APPD
P01	24/07/24	Issue for Skanska Review	MA	CB	VP
P02	24/02/25	MINOR AMENDMENTS	MA	CB	VP
C01	06/06/25	MINOR AMENDMENTS	MA	CB	VP
P04	12/06/25	HOLD POINTS REMOVED	MA	CB	VP
C02	15/09/25	MINOR AMENDMENTS	MA	CB	VP

DESIGNER
SWECO

CONTRACTOR
SKANSKA

CLIENT
national highways

PROJECT TITLE
A47/A11 THICKTHORN JUNCTION

PROJECT STAGE
PCF STAGE 5

DRAWING TITLE
KERBS FOOTWAYS & PAVED AREAS SHEET 20 OF 22

SUITABILITY
Accepted as Stage Complete – Stage 5

SHEET SIZE	SCALE	STATUS	REVISION
A1	1:500	A5	C02

DRAWING NUMBER
HE551492-SKAG-HKF-000-DR-CH-50020

IMPORTANT
SAFETY, HEALTH & ENVIRONMENTAL INFORMATION

TO BE READ IN CONJUNCTION WITH HAZARD REGISTER
DOC. REF: HE551492-SKAG-GHS-000-HS-ZZ-50001.

HAZARD REF	BRIEF DESCRIPTION OF HAZARD:-
011	OVERHEAD LINE
014	PROPERTIES
226	UTILITY STRIKE
227	UTILITY STRIKE
229	UTILITY STRIKE
280	OVERHEAD LINE