

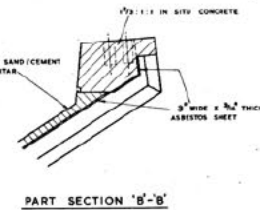
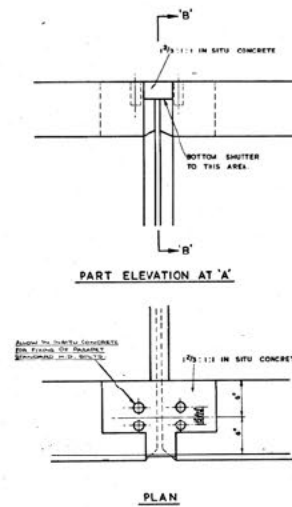
STANDARD ROAD OVERBRIDGES  
 PRE-CAST SERVICE DUCT-CONCRETE DETAILS  
 SCALE: 1/8" = 1/4" FULL SIZE

LY/CE/GH



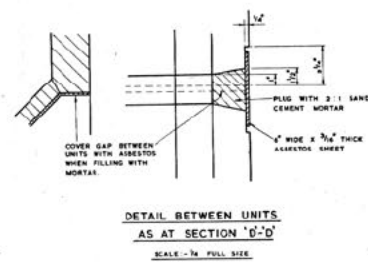
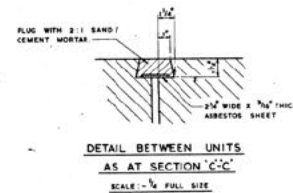
MINISTRY OF TRANSPORT  
**LONDON-YORKSHIRE MOTORWAY**  
 CRICK (NORTHAMPTONSHIRE)-DONCASTER BY-PASS SPECIAL ROAD

NOTE  
 FOR STRUCTURE NO. 10, 103  
 1) DUCTS WERE POURED INSITU INSTEAD OF PRECAST.  
 2) 2" x 2" TRIANGULAR FILLET AT 6 FT. CRD.

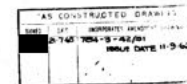


DETAIL BETWEEN UNITS  
 SCALE: 1/4" FULL SIZE

NOTE  
 JOINTS SHOULD NOT BE GROUTED UP UNTIL DECK CONCRETE HAS BEEN POURED AND STAGING REMOVED.



CONTRACT LY/CE/G, H



SIR OWEN WILLIAMS AND PARTNERS  
 LONDON W.1. MARCH 1962

DRG. No. 784-3-42/Z